



CRISIS EVENT RESPONSE AND RECOVERY ACCESS (CERRA) FRAMEWORK



DEFEND TODAY,
SECURE TOMORROW

The capability for state, local, tribal, and territorial (SLTT) authorities to safely, securely, and effectively control and coordinate the access of key response and recovery resources into an affected area during an emergency has been identified as a critical success factor in enabling overall community recovery.

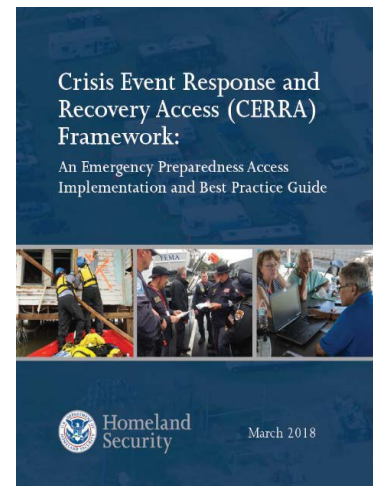
To assist with the access and re-entry issue, the Cybersecurity and Infrastructure Security Agency (CISA) Stakeholder Engagement Division has developed, through a collaborative public-private initiative, the **Crisis Event Response and Recovery Access (CERRA) Framework** to assist with the management of access and re-entry issues, and facilitate greater cross-jurisdictional interoperability nationwide. The CERRA Framework focuses on supporting state, local, and regional efforts to enable the successful transit and access of critical response and recovery resources before, during, and after emergencies, regardless of incident size.

The CERRA Framework is intended as voluntary guidance for SLTT government and law enforcement entities, when planning and developing an access management plan or program. The CERRA Framework describes a common approach by which communities can:

- Manage and control access for their jurisdiction.
- Develop a consistent, repeatable process to coordinate with response and recovery organizations that require access to or transit through a restricted area or emergency zone.
- Support outreach, education, and communication to ensure all stakeholders understand designated access requirements and procedures.
- Coordinate with law enforcement to implement access controls throughout an emergency.

Use of a common approach for managing access and phased re-entry is particularly important during incidents that require significant population evacuations to ensure the flow of essential commodities, coordination of public or private sector response and recovery assets, and restoration of critical infrastructure and essential public services, as well as a safe and orderly return of community members to an affected area.

The CERRA Framework is compatible with existing national incident management guidance and preparedness doctrine (e.g., National Incident Management System [NIMS], Incident Command System [ICS], National Response Framework [NRF]). Use of the CERRA Framework is meant to serve as an additional tool for emergency preparedness planning to enable response and recovery operations and builds upon prior and existing efforts by the Emergency Services Sector Coordinating Council (ES SCC), cross-sector critical infrastructure stakeholders, and multiple state and local crisis access and re-entry programs.



CERRA Framework

For more information, visit the [Crisis Event Response and Recovery Access \(CERRA\) Framework](#) page, view the [CERRA Introductory Video](#), or contact us at EmergencyServicesSector@cisa.dhs.gov.

