

2023
**CHEMICAL
SECURITY
SUMMIT**

August 29-31, 2023

#ChemicalSecurity



CHEMICAL SECURITY SUMMIT

August 30, 2023

Extreme Weather Threats to Chemical Security

Sunny Wescott

Lead Meteorologist, Infrastructure Security, CISA

Cindy Huang

Emergency Management Specialist

Federal Emergency Management Agency (FEMA)

Gene Shearer

Supply Chain Analysis Network (SCAN) Program Manager

Federal Emergency Management Agency (FEMA)

Moderator: Sarah Easton

Chief, Risk and Data Section

Compliance Branch, CISA Chemical Security



#ChemicalSecurity

Climate Change Considerations in Emergency Management

CISA Chemical Security Summit | August 30, 2023



FEMA

Climate Change and Emergency Management



FEMA

Climate Change Impacts



FEMA

National Climate Assessment (NCA)

Front Matter

- About this Report
- Guide to the Report

Summary Findings

- 1. Overview

National Topics

- 2. Our Changing Climate
- 3. Water
- 4. Energy Supply, Delivery & Demand
- 5. Land Cover & Land-Use Change
- 6. Forests
- 7. Ecosystems, Ecosystem Services, & Biodiversity
- 8. Coastal Effects
- 9. Oceans & Marine Resources
- 10. Agriculture & Rural Communities
- 11. Built Environment, Urban Systems, & Cities
- 12. Transportation

National Topics (cont.)

- 13. Air Quality
- 14. Human Health
- 15. Tribes & Indigenous Peoples
- 16. Climate Effects on U.S. International Interests
- 17. Sector Interactions, Multiple Stressors, & Complex Systems

Regions

- 18. Northeast
- 19. Southeast
- 20. U.S. Caribbean
- 21. Midwest
- 22. Northern Great Plains
- 23. Southern Great Plains
- 24. Northwest
- 25. Southwest
- 26. Alaska
- 27. Hawai'i & U.S.-Affiliated Pacific Islands

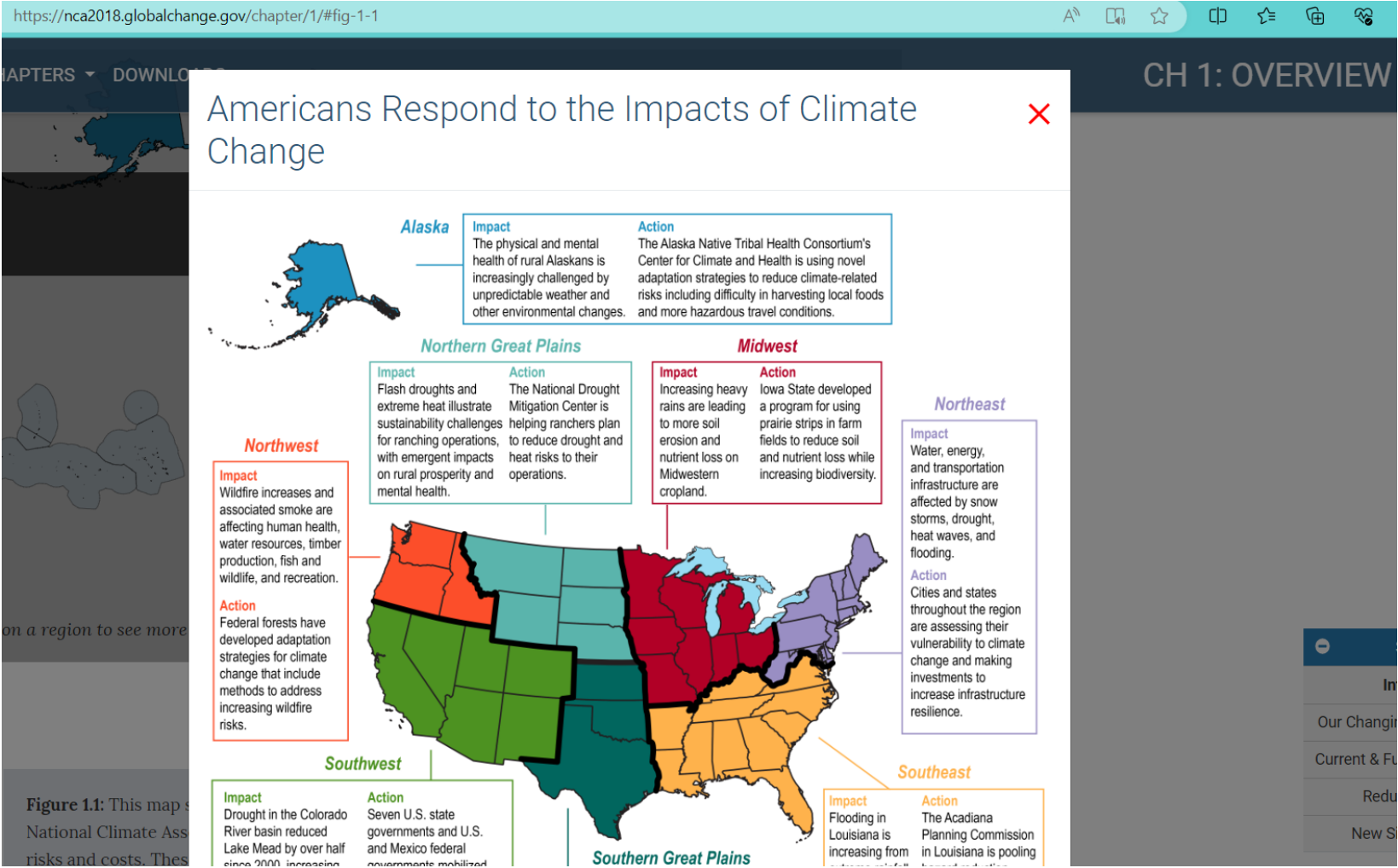
Responses

- 28. Reducing Risks Through Adaptation Actions
- 29. Reducing Risks Through Emissions Mitigation

Appendices

- 1. Report Development Process
- 2. Information in the Fourth National Climate Assessment
- 3. Data Tools & Scenario Products
- 4. Looking Abroad
- 5. Frequently Asked Questions

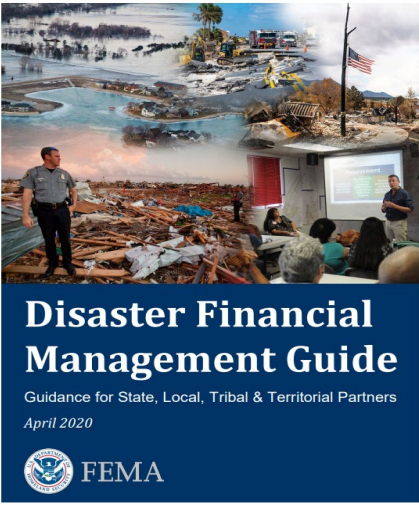
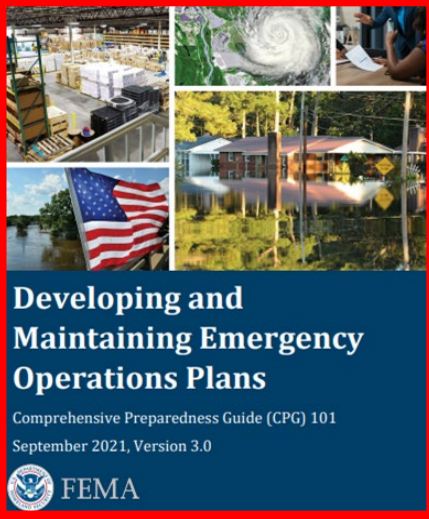
NCA Impacts by Region



An aerial photograph of a coastal town, likely in New England, featuring a large marina filled with sailboats and yachts. The town is built on a hillside, with numerous houses and buildings, including a prominent church with a tall steeple. The surrounding area is densely forested with green trees. The entire image is overlaid with a semi-transparent blue filter.

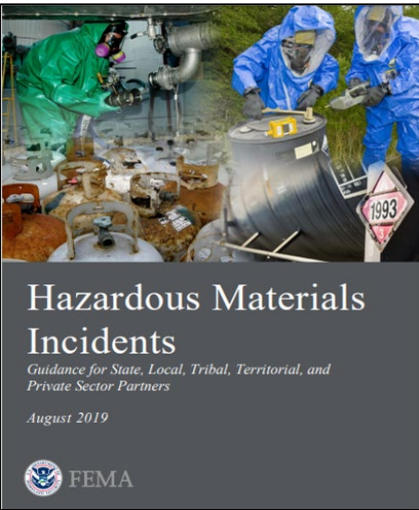
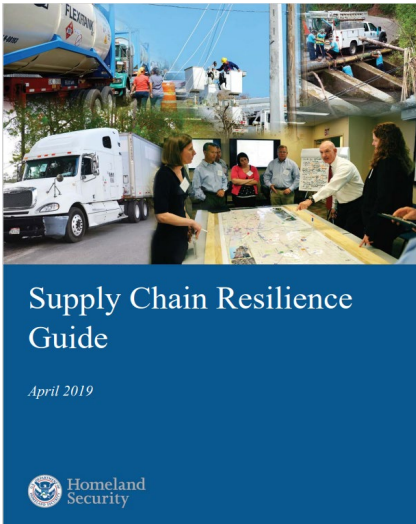
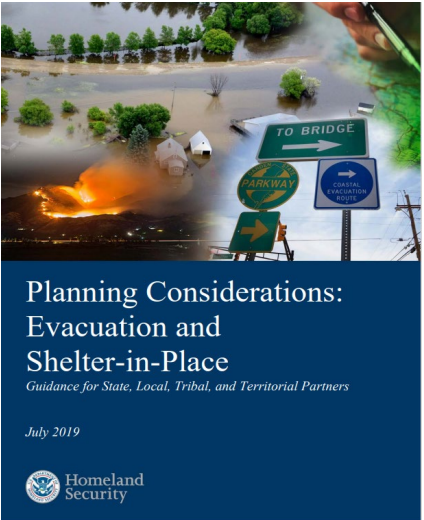
FEMA Resources

Existing FEMA Planning Resources



Planning tools and resources to address different planning gaps and challenges

<https://www.fema.gov/plan>



Climate Adaptation Planning for Emergency Managers

- Help emergency managers incorporate climate adaptation into emergency management planning efforts.
 - Inform emergency managers of ways to incorporate climate change into risk assessments, future planning and resource considerations.
- Direct planners to resources and decision-support tools relevant to localized impacts.
- Highlight innovative practices from communities.



Climate Adaptation Planning for Emergency Managers

DRAFT - June 2023



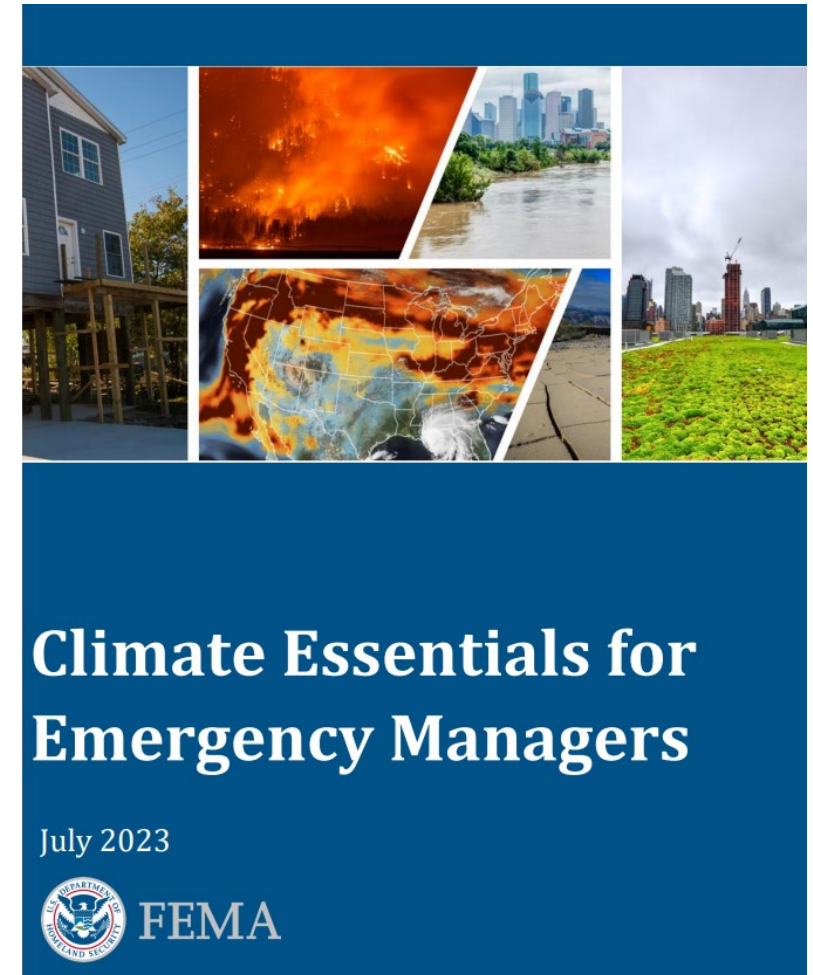
FEMA



FEMA

FEMA Climate Resilience

- Find resources for emergency managers and how FEMA is addressing climate change
- Guides for:
 - Nature-based Solutions
 - Climate Essentials for Emergency Managers
- <https://www.fema.gov/emergency-managers/risk-management/climate-resilience>



FEMA Response and Recovery Climate Change Planning Guidance

- FEMA Response and Recovery Climate Change Planning Guidance
- Geared toward FEMA response planners
- <https://www.fema.gov/emergency-managers/national-preparedness/frameworks/federal-interagency-operational-plans>
 - Under “Planning Guidance” section



FEMA



FEMA Response and Recovery Climate Change Planning Guidance

First Edition

July 2023



Published by:

FEMA

In partnership with:



FEMA Floodmaps

- Flood maps are one tool that communities use to know which areas have the highest risk of flooding.
- <https://www.fema.gov/flood-maps>

MSC Home

MSC Search by Address

MSC Search All Products

▼ MSC Products and Tools

- Hazus
- LOMC Batch Files
- Product Availability

MSC Frequently Asked Questions (FAQs)

MSC Email Subscriptions

Contact MSC Help

FEMA Flood Map Service Center: Welcome!

Looking for a Flood Map? [?](#)

Enter an address, a place, or longitude/latitude coordinates:

Enter an address, a place, or longitude/latitude coordinates

Looking for more than just a current flood map?

Visit [Search All Products](#) to access the full range of flood risk products for your community.

About Flood Map Service Center

The FEMA Flood Map Service Center (MSC) is the official public source for flood hazard information produced in support of the National Flood Insurance Program (NFIP). Use the MSC to find your official flood map, access a range of other flood hazard products, and take advantage of tools for better understanding flood risk.

FEMA flood maps are continually updated through a variety of processes. Effective information that you download or print from this site may change or become superseded by new maps over time. For additional information, please see the [Flood Hazard Mapping Updates Overview Fact Sheet](#)

FEMA Grants

- Types of Grants
 - Preparedness Grants
 - Hazard Mitigation Assistance Grants
 - Continuous Training Grants Program
- Tools to assist with grants
- <https://www.fema.gov/grants>



FEMA

Cindy Huang
National Planning Branch
Planning and Exercise Division
Response Directorate

Cindy.Huang@fema.dhs.gov



FEMA