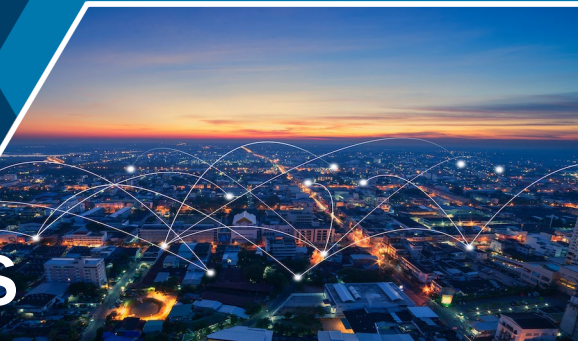




CISA GATEWAY DEPENDENCY & CASCADING IMPACTS ANALYSIS CAPABILITIES



OVERVIEW

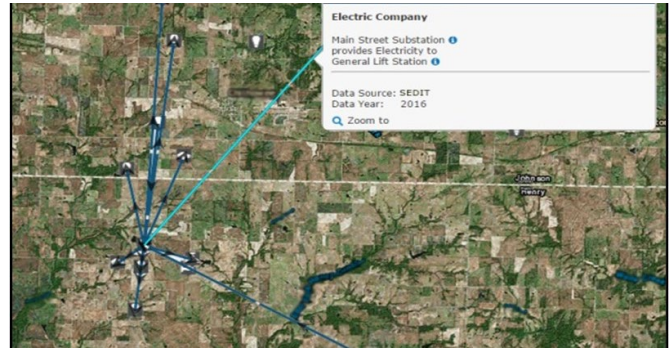
As the Nation’s critical infrastructure continues to become increasingly interconnected, the Cybersecurity and Infrastructure Security Agency (CISA) has steadily expanded its focus on identifying and analyzing the relationships between critical infrastructure facilities. The continued development of the CISA Gateway Dependency and Cascading Impacts Analysis Capabilities, also known as the Dependency Tool, provides an enhanced way to discover, analyze, and view critical infrastructure dependencies.

The Dependency Tool provides a rapid visual representation of the relationships and dependencies between critical infrastructure. Enhancements to these capabilities provide increased knowledge about critical infrastructure dependencies and enable improved stakeholder support for special events & incidents planning and decision-making processes. The Dependency Tool integrates several CISA Gateway applications. The methodologies produce a more streamlined interface for approved users to capture, enter, analyze, visualize, and manipulate dependency information.



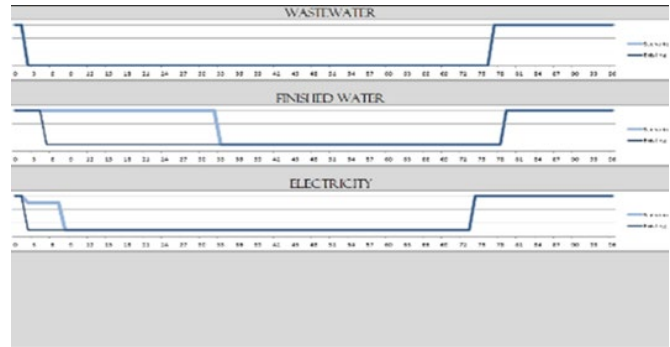
MAPVIEW ENHANCEMENTS

MapView, the CISA Gateway’s geospatial tool for viewing critical infrastructure, adds several features to include the ability to view a critical infrastructure facility’s upstream and downstream dependencies. It additionally provides CISA Gateway users the ability to simulate a compromise of the facility and view the cascading impacts over 12-hour increments. Users can add non-linear critical infrastructure facility dependencies to the geospatial view.



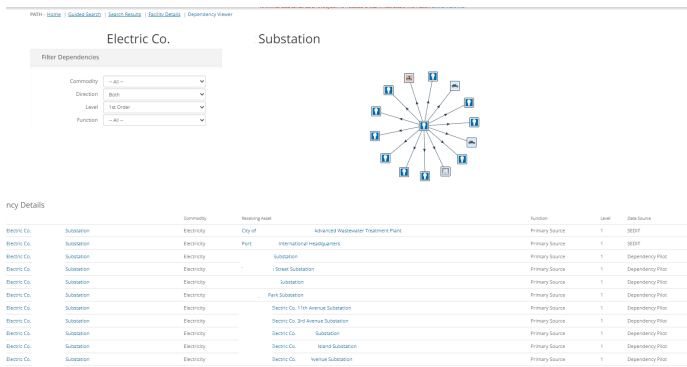
SURVEYS & ASSESSMENTS ENHANCEMENTS

The Surveys & Assessments application adds a new capability to the “bathtub curves” of the Dependency Survey. Now there is a more comprehensive way to show the owner-operator how applying resources to backup capabilities will grant the largest return on investment.



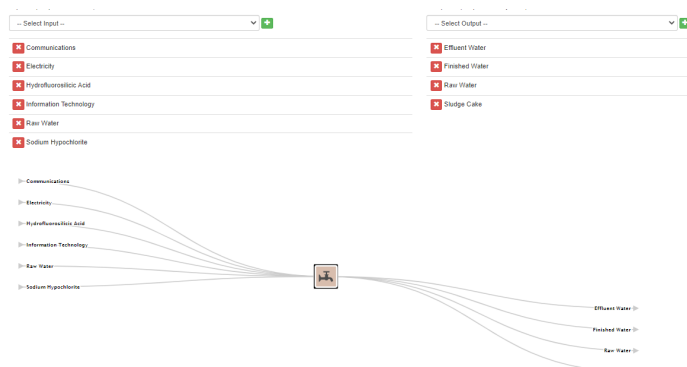
DEPENDENCY PROFILE EDITOR

Using the Department of Homeland Security Infrastructure Data Taxonomy (IDT) as a framework, the new Dependency Profile Editor stores general definitions about the inputs and outputs of a critical infrastructure facility, system, or area. The general profiles include established characteristics of critical infrastructure (e.g., inputs and outputs). This capability is also integrated into the dependency surveys found in the Surveys & Assessments area, automatically populating a base layer of data if no information currently exists for a specific facility. If an assessed facility has multiple taxonomy assignments, all general inputs and outputs will be prepopulated into the survey. The Dependency Profile Editor is located within the Tools Menu on CISA Gateway.



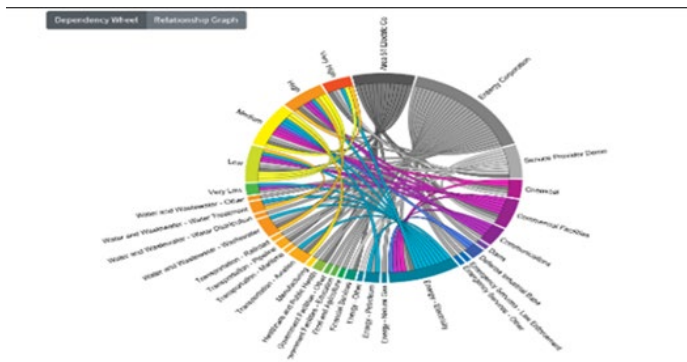
DIGITAL LIBRARY ENHANCEMENTS

The Digital Library increases usability of the facility details section allowing the direct editing of facility information and dependencies while still maintaining the quality of the data. The Dependency Analysts and Protective Security Advisors (PSAs) can quickly modify dependency information that will update throughout CISA Gateway to include the MapView and Special Events & Domestic Incidents Tracker (SEdit).



SPECIAL EVENTS & DOMESTIC INCIDENT TRACKER (SEdit) ENHANCEMENTS

The Special Events & Domestic Incidents Tracker (SEdit) tool houses the capability to select and view dependencies of multiple service providers on a single display. This data may be sorted and manipulated allowing for a more detailed and rapid analysis of regional dependency information.



RESOURCES

If you would like to learn how the CISA Gateway can support your organization’s homeland security efforts, to inquire about eligibility for accessing the CISA Gateway, or if you would like to establish access to the system, please contact the CISA Gateway Program Office at CISA-Gateway@mail.cisa.dhs.gov.

To learn more regarding the CISA Gateway, visit cisa.gov/cisa-gateway.