



# CISA GATEWAY DEPENDENCY & CASCADING IMPACTS ANALYSIS CAPABILITIES



DEFEND TODAY,  
SECURE TOMORROW

## INTRODUCTION

As the Nation’s critical infrastructure continues to become increasingly interconnected, the Cybersecurity and Infrastructure Security Agency (CISA) has steadily expanded its focus on identifying and analyzing the relationships between critical infrastructure facilities. The continued development of the CISA Gateway Dependency and Cascading Impacts Analysis Capabilities, also known as the Dependency Tool, provides an enhanced way to discover, analyze, and view critical infrastructure dependencies.

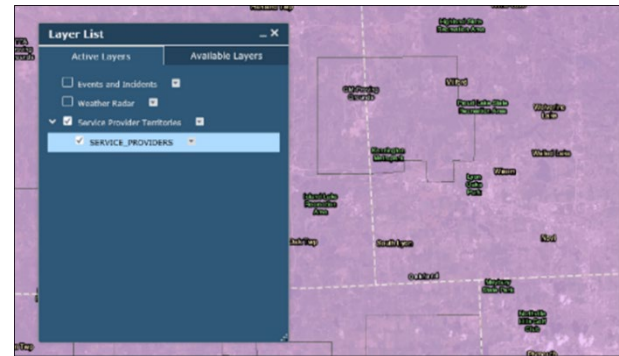
## OVERVIEW

The Dependency Tool provides a rapid visual representation of the relationships and dependencies between critical infrastructure. Enhancements to these capabilities provide increased knowledge about critical infrastructure dependencies and enable improved stakeholder support for special events & incidents planning and decision-making processes. The Dependency Tool integrates several CISA Gateway applications. The methodologies produce a more streamlined interface for approved users to capture, enter, analyze, visualize, and manipulate dependency information.



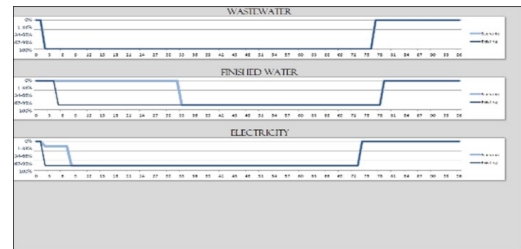
## MAP VIEW ENHANCEMENTS

Map View, the CISA Gateway’s geospatial application, adds several features to include the “Service Provider Territories” in the layers list widget and the “Waypoints” function. The “Service Provider Territories” selection is only available to Federal/Federal Contractor Dependency Analysts and Protective Security Advisors (PSA). It additionally allows these CISA Gateway users the ability to view service providers in relation to critical infrastructure as necessary. With the “Waypoints” function, users can add non-linear dependencies to the geospatial view.



## SURVEYS & ASSESSMENTS ENHANCEMENTS

The Surveys & Assessments application adds a new capability to the “bath tub curves” of the Dependency Survey. Now there is a more comprehensive way to show the owner-operator how applying resources to backup capabilities will grant the largest return on investment.



## DEPENDENCY PROFILE EDITOR

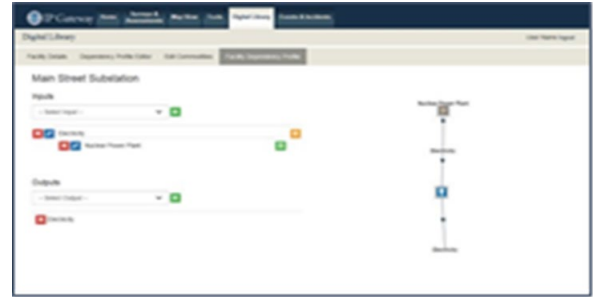
Using the Department of Homeland Security Infrastructure Taxonomy as a framework, the new Dependency Profile Editor stores general definitions about the inputs and outputs of a critical infrastructure facility, system, or area. The general profiles include established characteristics of critical infrastructure (e.g., inputs and outputs). This capability is also integrated into the dependency surveys found in the Surveys &



Assessments area, automatically populating a base layer of data if no information currently exists for a specific facility. If an assessed facility has multiple taxonomy assignments, all general inputs and outputs will be prepopulated into the survey. The Dependency Profile Editor is located within the Tools Menu on CISA Gateway.

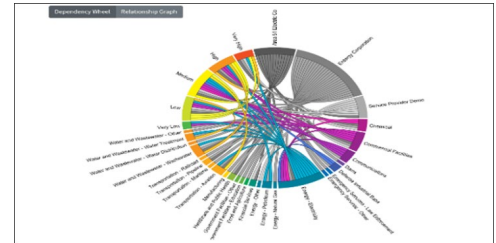
### DIGITAL LIBRARY ENHANCEMENTS

The Digital Library increases usability of the facility details section allowing the direct editing of facility information and dependencies while still maintaining the quality of the data. The Dependency Analysts and PSAs can quickly modify dependency information that will update throughout CISA Gateway to include the Map View and Events & Incidents.



### EVENTS & INCIDENTS ENHANCEMENTS

The Events & Incidents application houses the capability to select and view dependencies of multiple service providers on a single display. This data may be sorted and manipulated allowing for a more detailed and rapid analysis of regional dependency information.



### ADDITIONAL REFERENCE MATERIALS

For additional information on Dependency Analysis Capabilities, please reference the CISA Gateway User Guide located under the Resources tab on the CISA Gateway Landing Page at [gateway.cisa.gov](https://gateway.cisa.gov)

\*NOTE: The CISA Gateway is in the process of changing the name throughout the system from IP Gateway to CISA Gateway